

High Performance Cool Air Intake Kit



INSTALLATION INSTRUCTIONS

75-3013-2

CHEVROLET / GMC

C/K Pickup V8-5.0L

C/K Pickup V8-5.7L

Suburban V8-5.7L

Tahoe V8-5.7L

Yukon V8-5.7L

Qty Parts List

- 2 4" - 2" Adapter
- 1 3.5" - 4" x 3"
- 1 3.5" x 2" Adapter
- 1 Intake Tube
- 1 Intake Box
- 1 Intake Lid
- 1 CARB Sticker
- 2 #60 Hose Clamps
- 4 #64 Hose Clamps
- 1 Steel Ring Adapter

Qty Parts List

- 1 Ring Gasket
- 4 10-24 Screws
- 3 M6 Cap Head Screws
- 8 #10 Washers
- 4 10-24 Nylock Nuts
- 1 1/2" Grommet
- 2 1/4" Washers
- 4 #10 Sealing Washers
- 4 SS Pan Head Screws
- 1 Air Filter

Tools Required

- Screwdriver
- Ratchet
- 5mm Allen wrench
- 1/8" Allen wrench
- 3/8" Socket
- 7/16" Socket
- 7/32" Socket
- 13mm Socket
- 5/16" Wrench
- 7/16" Wrench

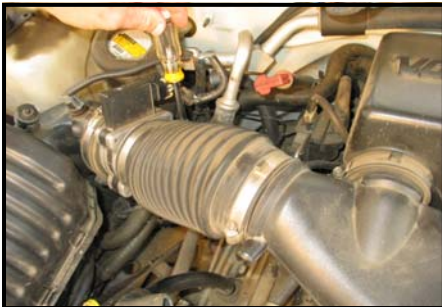
1. Disconnect battery and remove "T" nut.



2. Disconnect vent hose from intake tube.



3. Loosen hose clamp on mass air sensor



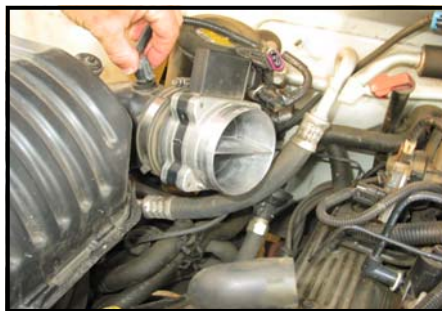
4. Lift and remove tube.



5. Disconnect mass air sensor.



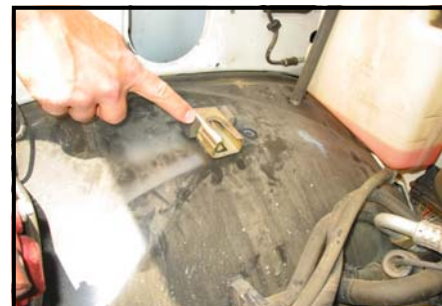
6. Disconnect air temperature sensor.



7. Pull air box towards engine, up and out.



8. Remove bracket by removing bolt from inside fender well.



9. Remove stud.



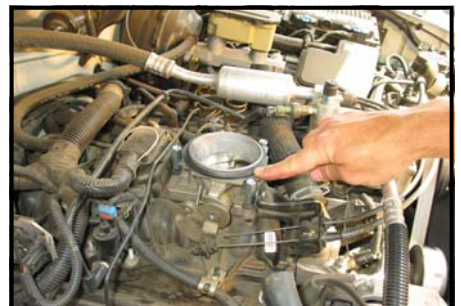
10. Remove the bolt from the stand off using a 7/32" wrench. Take lower portion of the bolt and reinstall in throttle body. Thus, you have just lowered the position of the bolt.



11. Install coupling nuts.



12. Install gasket.

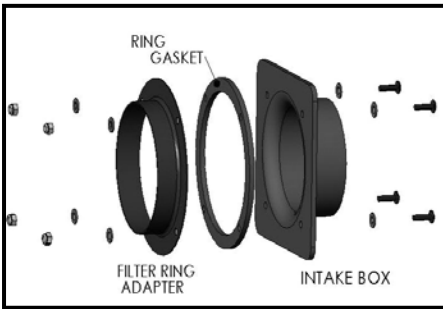
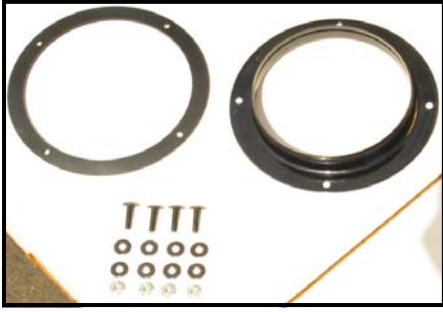


INSTALLATION INSTRUCTIONS (continued)

13. Install throttle body adapter using 3 M6 screws.



14. Assemble filter adapter to box using hardware provided. Be sure to put gasket between box and adapter.



15. Carefully remove air temp. sensor from OEM box.



16. Carefully separate air temp. sensor from grommet. Remove grommet from tube.



17. Install S&B provided grommet and then the sensor into box. Make sure temp. sender is secure.



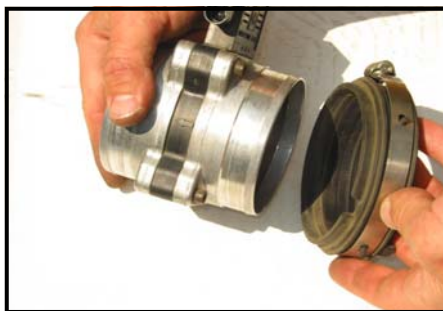
18. Install air box using 1/4"-20 x 1/2" hex bolts and washers through fender well.



19. Loosen hose clamp and remove mass air intake from OEM box.



20. Remove flange adapter from mass air sensor.



21. Using 3 1/2" adapter, mount mass air sensor to S&B high performance air box.



22. Mount 3 1/2" to 4" connection adapter to mass air sensor.



23. Clamp 4" x 1 1/4" long adapter to throttle body adapter.



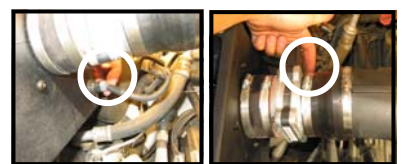
24. Install tube.



25. Reconnect vent tube.



26. Reconnect temperature and mass air sensor.



27. Install high performance filter.



28. Install lid on high performance air box & reconnect negative battery terminal. Installation complete.



PERFORMANCE TESTING

1. Verify that all connection points have been tightened and are secure in vehicle.
2. Engage parking brake and start your engine. To ensure that the system was installed properly, listen for abnormal noises. If an air leak is detected, re-inspect hoses and connections as they may need to be tightened.
3. S&B FILTERS RECOMMENDS THAT YOU KEEP YOUR OEM INTAKE SYSTEM IN THE EVENT IT IS REQUIRED IN THE FUTURE.
4. In order to maintain proper warranty, all connections and components must be checked periodically for realignment and to tighten all connections. Failure to do so will void your warranty.
5. Use only S&B cleaning and oil products to service your filter. Using other company's oil and cleaner products may void your warranty.